

The Sentry 10kW Dual Axis Tracker

Control

- Astronomical Control
- High Precision Drive Motors
- Advanced Onboard Logic
- iTrac - Ipod, and Ipad Control

Robust Construction

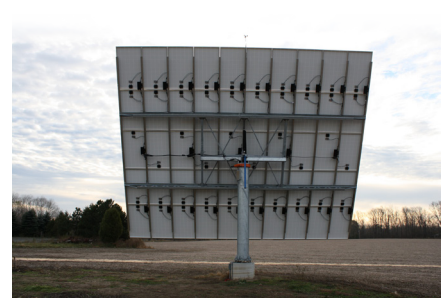
- Oversized 18" Support Column
- Hot Dipped Galvanized
- J-Bolts in Base for Accurate Leveling
- Up to 11.5 kW in size

Safeguard

- High Wind Safety Mode
- Solid State, Water Proof Inverters
- Emergency Power Supply
- Anti Theft Protection

Communication

- Per Module Monitoring
- Remote Control
- Maintenance via Internet
- Advanced Data Logging



www.sentinelsolar.com
info@sentinelsolar.com



www.dommelvalley.ca
353 Saunders Road, Unit 13
Barrie, Ontario
L4N 9A3

Tel. (705) 331-4199

TRACKER PURCHASE WORKSHEET

TRACKER FEATURES	BENEFITS TO micro-FIT CUSTOMER	SENTINEL 10kW TRACKER	OTHER TRACKER*
Swiss Made Motors and Gear Set	World renowned manufacturer of quality long lasting motors and gears	✓	
Remote Monitoring	Allowing for remote diagnostic and tracker function adjustments	✓	
18" Structural Steel Post	Will withstand over 100 mph wind loads with tracker in vertical position	✓	
Astronomical Tracking	Precise tracking of sun with less wear and tear on on motors and gears than Active Sun tracking	✓	
Isolated Backup System	Battery back up designed to return the tracker to table top safety position in the event of power failure	✓	
Proprietary Locking Hardware	Stainless steel security bolts designed to protect solar modules against theft	✓	
Fully Engineered	Compliant with Ontario farmer building code, and Canadian Engineering standards	✓	
Aluminum I-Beams	Light weight aluminum rail system prevents galvanic corrosion between modules frames and mounting rail	✓	
17" Commercial Worm Drive	Largest drive used in the tracker market to ensure stability and longevity of system	✓	
Stainless Steel Linear Actuator	Oversized by design, highly resistant to corrosion, a minimum of servicing needed	✓	
AC Load Centre in Post	Aesthetically pleasing as all electrical is hidden away out of sight and out of the elements	✓	
Ipod/Ipad/Iphone Controls	Total control from the convenience of a tractor, service vehicle or home. Ideal for owners and service personel	✓	
Snow Dump	Increased winter power production	✓	
Designed for Enphase Micro Inverters	System fully approved and engineered to be used with Enphase inverters.	✓	
Quality Ontario PV Panels	Oldest manufacturer in Ontario. Industry leading +/- 2 watts tolerance, 4mm panel glass	✓	
Manufactured and Supported in and from Ontario	Quick service response, replacement parts, and expertise by proud Canadians living in Ontario	✓	
Various in-ground base designs	Most reliable base design is subterranean to prevent tilting due to frost heaves and heavy wind	✓	
High Wind Safety Mode	At 50 kph sensors ensure the tracker moves into safety position to protect your investment	✓	
Galvanized structure	All steel components are Hot Dip Galvanized to ensure longevity of the structure	✓	
J-bolt Base anchoring	Ensures level installation of tracker post year after year, prolongs life of all components	✓	

* Feel free to use this tool to explore what our competitors are offering. Sentinel Solar is confident the Sentinel Sentry 10kw dual axis tracker it has engineered and produced is the best tracker solution on the market. Please contact Dommel Valley Green Power at (705) 331-4199 for more information or to schedule a site visit.